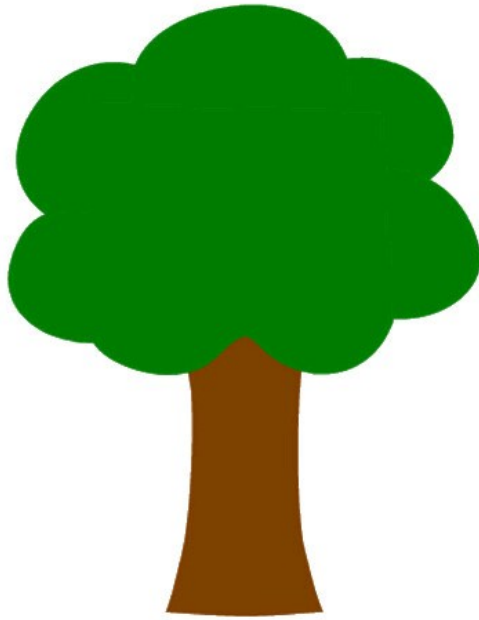


Meet a Tree



Partner up!

- 1. Have one person in each pair be blindfolded/eyes shut.**
- 2. The non-blindfolded person acts as a guide and leads his/her partner to a tree.**
- 3. The blindfolded person tries to find all the details of the tree without using sight.**
- 4. Once the blindfolded partner has a good understanding of the tree, the guide will lead their partner back to the starting point.**
- 5. Blindfolded person becomes unblindfolded and goes looking for their tree.**
- 6. Switch roles and start over!**
- 7. For younger kids, just compare differences between trees.**